



VESSEL NAME	BUILT	IMO NO.	FLAG	VESSEL NAME	BUILT	IMO NO.	FLAG
INDUSTRIAL RANGER	2005	9277280	LIBERIA	INDUSTRIAL REVOLUTION	2005	9267742	LIBERIA
INDUSTRIAL ROYAL	2005	9267754	LIBERIA	INDUSTRIAL RUBY	2005	9277292	LIBERIA

GENERAL INFORMATION

TYPE	HEAVY-LIFT BOX-HOLD MPP TWEENDECKER
CLASS	DNV GL

TONNAGE

DWT	9,674 MT
GT	8,963
NT	4,522

MAIN DATA

LOA	134.55 M
BEAM	21.50 M
SUMMER DRAFT	7.95 M
MAX SPEED	ABOUT 15 KNOTS

HOLDS / HATCHES

NUMBER	2 HOLDS / 2 HATCHES
HATCH DIMENSIONS	
HATCH NO. 1:	25.50 X 16.90 / 13.00 M
HATCH NO. 2:	57.98 X 16.90 M

CARGO CAPACITY

TOTAL CAPACITY	13,875 CBM (WITH TWEENDECK) 14,951 CBM (WITHOUT TWEENDECK)
----------------	---

FLOOR SPACE

UNDER DECK	2,742 SQM
ON DECK	1,413 SQM
TOTAL	4,155 SQM

DECK STRENGTHS

TANKTOP	15 MT / SQM
TWEENDECK	3 MT / SQM
HATCHCOVER	3.5 MT / SQM

CONTAINER CAPACITY

IN HOLD	252 TEU
ON DECK	295 TEU
TOTAL (NOMINAL)	547 TEU

CARGO HANDLING GEAR

CRANES	2 X 250 MT (PORT SIDE)
COMBINED LIFT CAPACITY	500 MT

SPECIAL EQUIPMENT/FEATURE

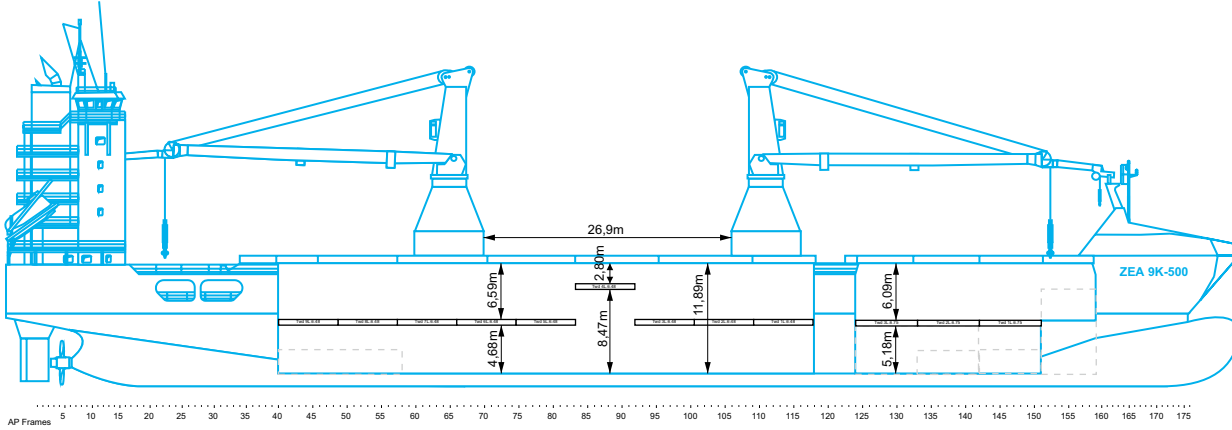
LAKES FITTED	YES
BOWTHRUSTER	650 KW

All above details are given in good faith but without guarantee. This description may not be used as basis for time charter parties or booking notes. If you would like to receive further information please contact our sales team or send your request by email to tonnage@zeamarine.com.

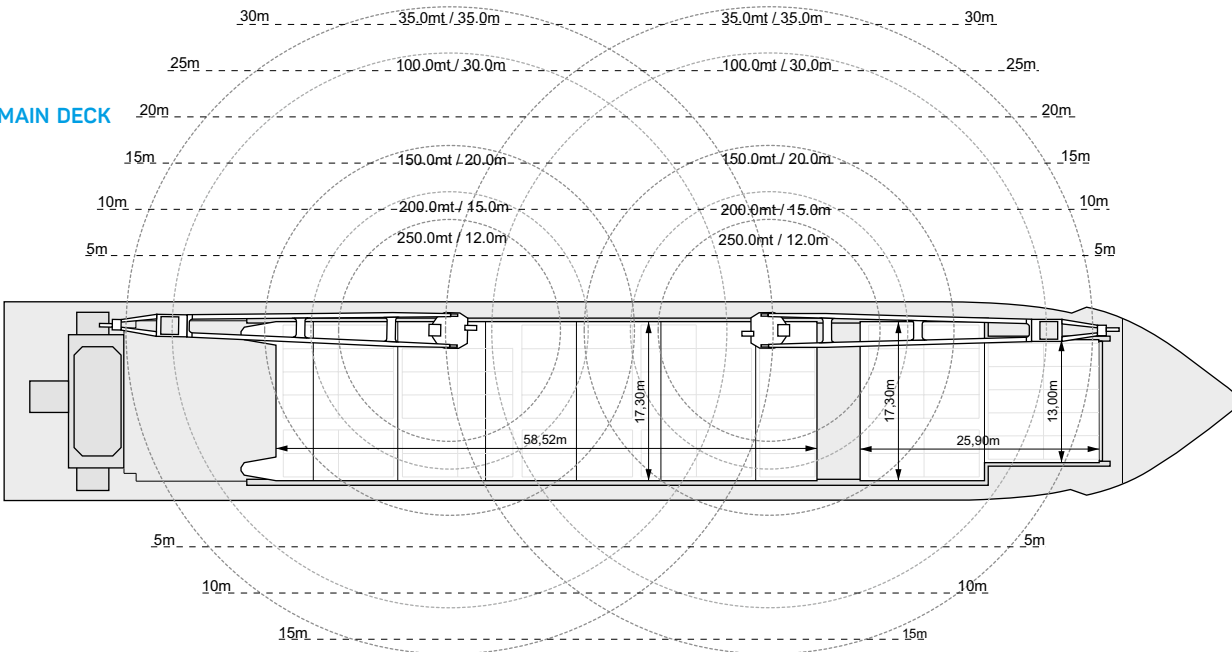
ZEA 9K-500

INDUSTRIAL RANGER INDUSTRIAL REVOLUTION
INDUSTRIAL ROYAL INDUSTRIAL RUBY

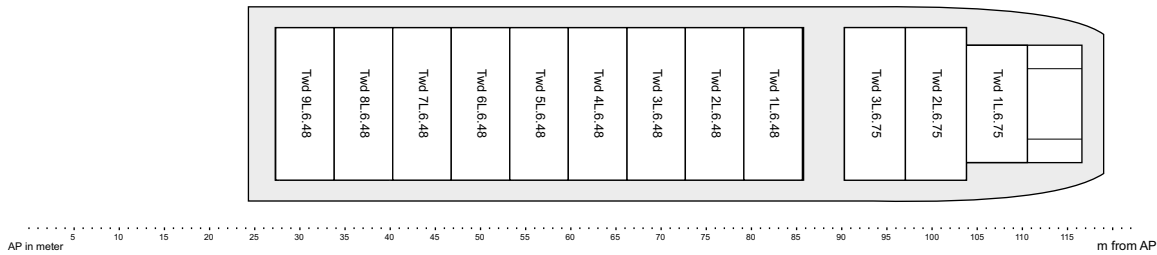
SIDE VIEW



MAIN DECK



TWEENDECK



HOLDS & DOUBLE BOTTOM

