



VESSEL NAME	BUILT	IMO NO.	FLAG	VESSEL NAME	BUILT	IMO NO.	FLAG
INDUSTRIAL HEDLAND	2009	9352353	SRI LANKA	INDUSTRIAL HOBART	2009	9352341	SRI LANKA

GENERAL INFORMATION

TYPE	BOX-HOLD MPP SINGLE/TWEEDECKER
CLASS	DNV GL

TONNAGE

DWT	7,800 MT
GT	4,990
NT	2,648

MAIN DATA

LOA	118.55 M
BEAM	15.42 M
SUMMER DRAFT	7.05 M
MAX SPEED	ABOUT 14 KNOTS

HOLDS / HATCHES

NUMBER	2 HOLDS / 2 HATCHES
HATCH DIMENSIONS	
HATCH NO. 1:	27.00 M X 12.97 M
HATCH NO. 2:	53.24 M X 12.97 M

CARGO CAPACITY

TOTAL CAPACITY	9,415 CBM 332,500 CBFT
----------------	---------------------------

FLOOR SPACE

UNDER DECK	2,009 SQM
ON DECK	1,052 SQM
TOTAL	3,061 SQM

DECK STRENGTHS

TANKTOP	15 MT / SQM
TWEEDECK	3.5 MT / SQM
HATCHCOVER	1.75 MT / SQM

CONTAINER CAPACITY

IN HOLD	162 TEU
ON DECK	185 TEU
TOTAL (NOMINAL)	347 TEU

CARGO HANDLING GEAR

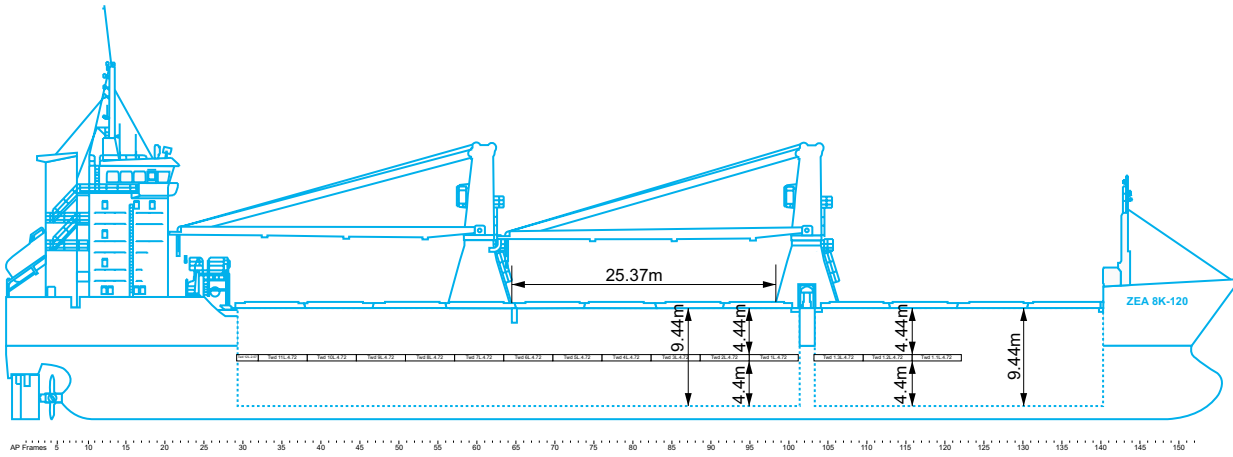
CRANES	2 X 60 MT (PORT SIDE)
COMBINED LIFT CAPACITY	120 MT

SPECIAL EQUIPMENT/FEATURE

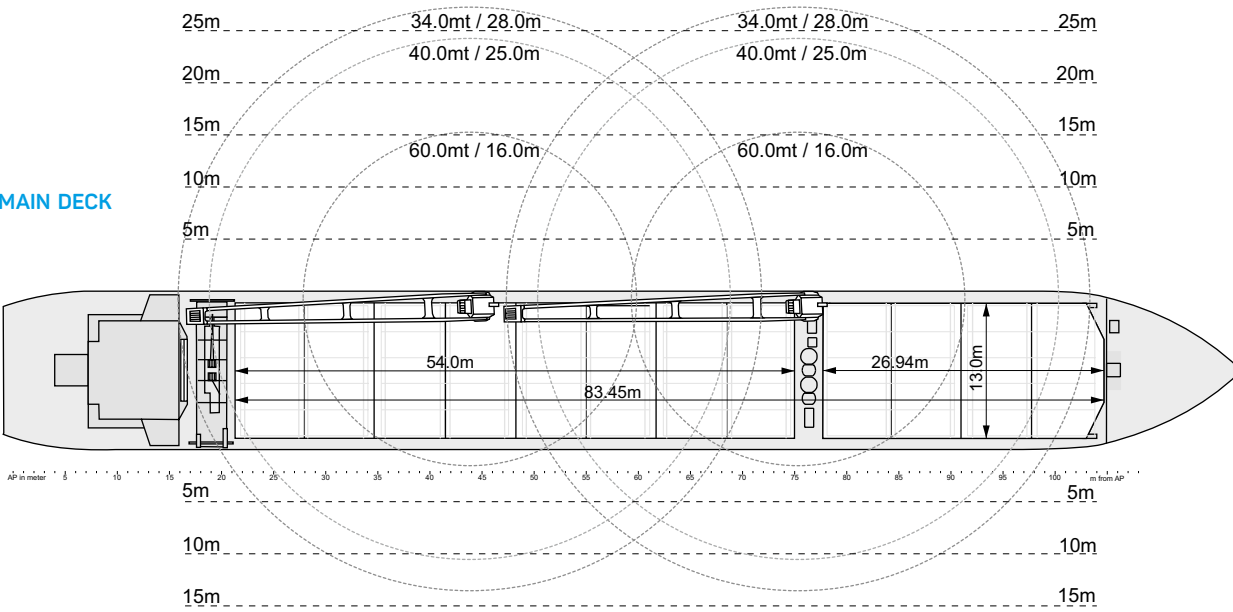
IMO FITTED	YES
CO2 FITTED	YES
BOWTHRUSTER	300 KW

All above details are given in good faith but without guarantee. This description may not be used as basis for time charter parties or booking notes. If you would like to receive further information please contact our sales team or send your request by email to tonnage@zeamarine.com.

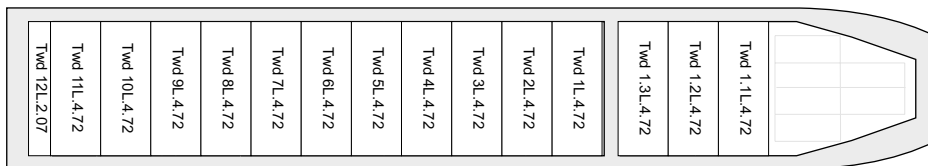
SIDE VIEW



MAIN DECK



TWEENDECK



HOLDS & DOUBLE BOTTOM

