



VESSEL NAME	BUILT	IMO NO.	FLAG
HC NATALIA	2001	9218193	ANTIGUA & BARBUDA

### GENERAL INFORMATION

TYPE	GEARLESS SINGLEDECKER / BULKCARRIER
CLASS	RINA

### TONNAGE

DWT	7,567.4 MT
GT	5,381
NT	2,626

### MAIN DATA

LOA	107.58 M
BEAM	18.20 M
SUMMER DRAFT	6.64 M
MAX SPEED	ABOUT 10.5 KNOTS

### HOLDS / HATCHES

NUMBER	3 HOLDS / 3 HATCHES
HATCH DIMENSIONS	
HATCH NO. 1:	20.29 X 15.20 M
HATCH NO. 2:	28.70 X 15.20 M
HATCH NO. 3:	24.50 X 15.20 M

### FLOOR SPACE

UNDER DECK	1,117 SQM
ON DECK	1,032 SQM
TOTAL	2,149 SQM

### CARGO CAPACITY

TOTAL GRAIN CAPACITY	
HOLD 1:	2,956 CBM
HOLD 2:	3,747 CBM
HOLD 3:	3,176 CBM
TOTAL:	9,880 CBM

### DECK STRENGTHS

TANKTOP	20 MT / SQM
HATCHCOVER	1.75 MT / SQM

### CARGO HANDLING GEAR

GRABS	EQUIPPED WITH 3 EL-HYDRAULIC GRABS
-------	------------------------------------

### SPECIAL EQUIPMENT/FEATURE

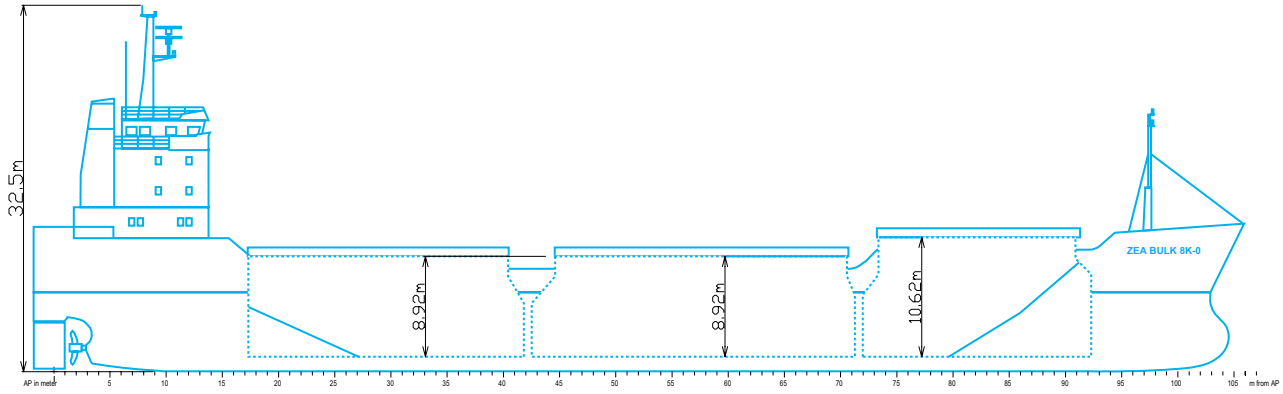
IMO FITTED	YES
CO2 FITTED	YES
GRAB SUITABLE	YES
HOLD VENTILATION	60 CHANGES/HOUR
BOWTHRUSTER	170 KW

All above details are given in good faith but without guarantee. This description may not be used as basis for time charter parties or booking notes. If you would like to receive further information please contact our sales team or send your request by email to [tonnage@zeamarine.com](mailto:tonnage@zeamarine.com).

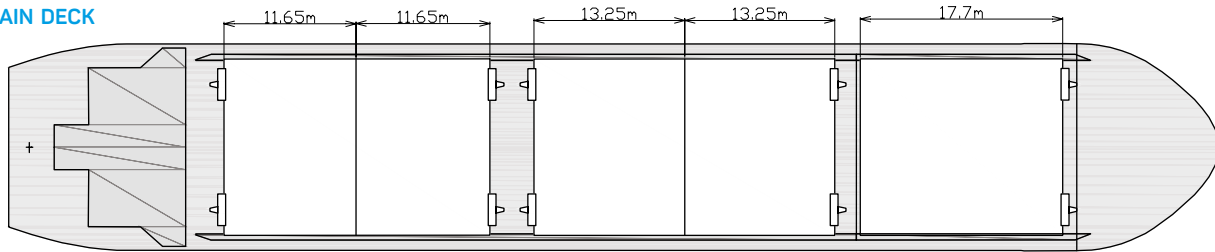
# ZEA BULK 8K-0

HC NATALIA

## SIDE VIEW



## MAIN DECK



## TWEENDECK

