



VESSEL NAME	BUILT	IMO NO.	FLAG	VESSEL NAME	BUILT	IMO NO.	FLAG
NOMADIC MILDE	2011	9463554	MARSHALL ISLANDS	CELINE C	2010	9463566	UK
NOMADIC HJELLESTAD	2010	9452220	MARSHALL ISLANDS	SIDER JASMINE	2010	9463542	PORTUGAL
SIDER MICHELLE	2010	9452218	PORTUGAL				

GENERAL INFORMATION

TYPE	BOX-HOLD MPP SINGLE/TWEEDECKER
CLASS	BUREAU VERITAS

TONNAGE

DWT	12,914 MT
GT	9,530
NT	4,398

MAIN DATA

LOA	138.06 M
BEAM	21.33 M
SUMMER DRAFT	8.056 M
MAX SPEED	ABOUT 13.5 KNOTS

HOLDS / HATCHES

NUMBER	2 HOLDS / 2 HATCHES
HATCH DIMENSIONS	
HATCH NO. 1:	37.5 X 17.5 M
HATCH NO. 2:	50.25 X 17.50 M

CARGO CAPACITY

TOTAL CAPACITY	16,230 CBM BALE 573,158 CBFT
----------------	---------------------------------

FLOOR SPACE

UNDER DECK	2,907 SQM
ON DECK	1,691 SQM
TOTAL	4,598 SQM

DECK STRENGTHS

TANKTOP	16 MT / SQM
TWEEDECK	4 MT / SQM
HATCHCOVER	1.75 MT / SQM

CONTAINER CAPACITY

IN HOLD	366 TEU
ON DECK	370 TEU
TOTAL (NOMINAL)	736 TEU

CARGO HANDLING GEAR

CRANES	2 X 80 MT (STARBOARD)
COMBINED LIFT CAPACITY	160 MT

SPECIAL EQUIPMENT/FEATURE

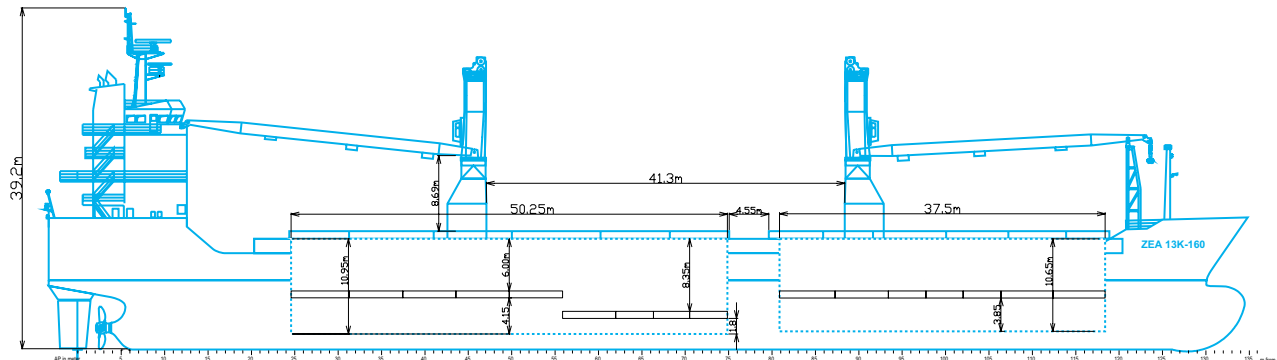
BOWTHRUSTER	500 KW
-------------	--------

All above details are given in good faith but without guarantee. This description may not be used as basis for time charter parties or booking notes. If you would like to receive further information please contact our sales team or send your request by email to tonnage@zeamarine.com.

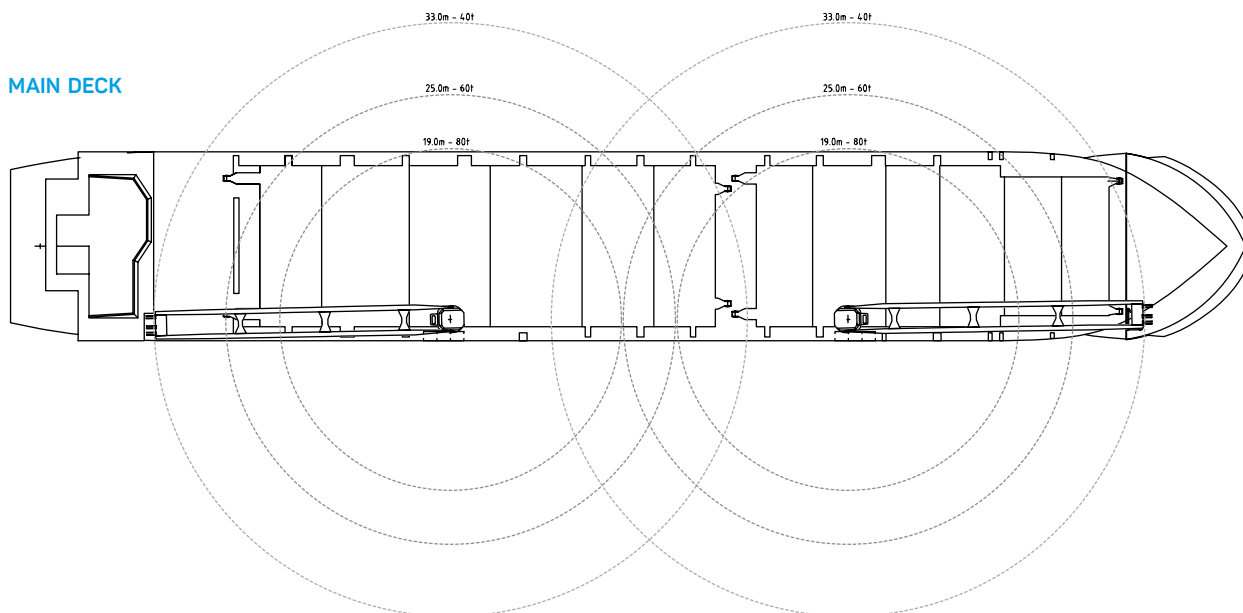
ZEA 13K-160

NOMADIC MILDE	CELINE C
NOMADIC HJELLESTAD	SIDER JASMINE
SIDER MICHELLE	

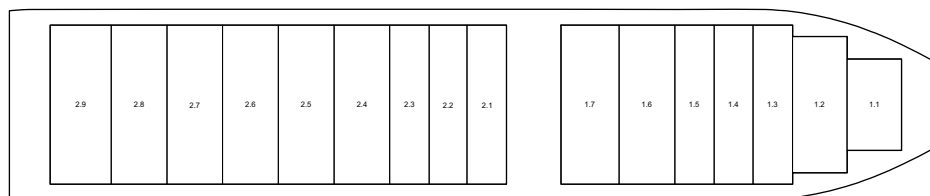
SIDE VIEW



MAIN DECK



TWEENDECK



HOLDS & DOUBLE BOTTOM

