



VESSEL NAME	BUILT	IMO NO.	FLAG	VESSEL NAME	BUILT	IMO NO.	FLAG
ZEA SERVANT	2018	9741126	HONGKONG	INDUSTRIAL SWIFT	2017	9741152	LIBERIA
INDUSTRIAL SONG	2017	9750464	PORTUGAL	INDUSTRIAL SKIPPER	2016	9741138	LIBERIA
INDUSTRIAL STRENGTH	2016	9741140	LIBERIA				

GENERAL INFORMATION

TYPE	HEAVY-LIFT BOX-HOLD MPP TWEENDECKER
CLASS	DNV GL

TONNAGE

DWT	12,300 MT
GT	11,436
NT	4,391

MAIN DATA

LOA	147.00 M
BEAM	22.80 M
SUMMER DRAFT	8.10 M
MAX SPEED	ABOUT 15 KNOTS

HOLDS / HATCHES

NUMBER	2 HOLDS / 2 HATCHES
HATCH DIMENSIONS	
HATCH NO. 1:	12.75 X 12.56 M
HATCH NO. 2:	76.50 X 17.60 M

CARGO CAPACITY

TOTAL CAPACITY	16,180 CBM (WITH TWEENDECK)
	17,612 CBM (WITHOUT TWEENDECK)

FLOOR SPACE

UNDER DECK	2,870 SQM
ON DECK	1,561 SQM
TOTAL	4,431 SQM

DECK STRENGTHS

TANKTOP	16 MT / SQM
TWEENDECK	4 MT / SQM
HATCHCOVER	4 MT / SQM (GLOBAL) 8 MT / SQM (PONTOON AREA)

CONTAINER CAPACITY

IN HOLD	316 TEU
ON DECK	522 TEU
TOTAL (NOMINAL)	838 TEU
REEFER PLUGS	50 ON DECK

CARGO HANDLING GEAR

CRANES	2 X 250 MT (PORT SIDE)
COMBINED LIFT CAPACITY	500 MT

SPECIAL EQUIPMENT/FEATURE

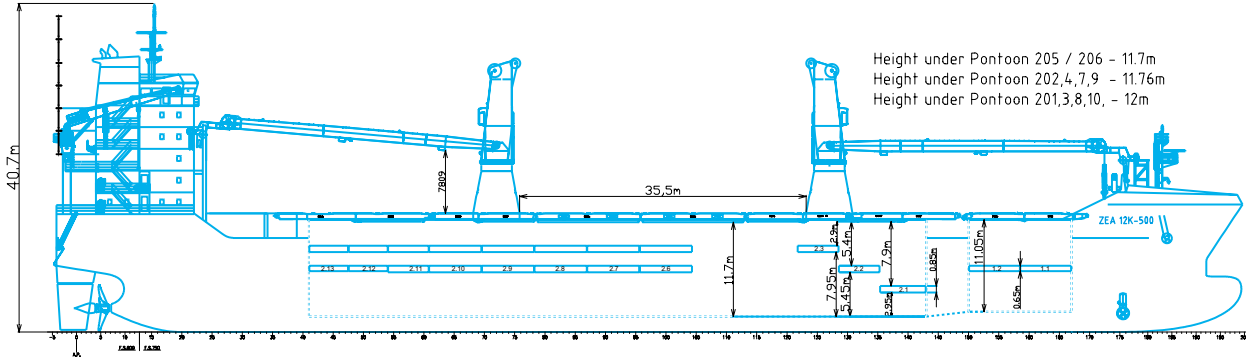
IMO FITTED	YES
LAKES FITTED	YES
A60 BULKHEAD	YES
CO2 FITTED	YES
BOWTHRUSTER	600 KW

All above details are given in good faith but without guarantee. This description may not be used as basis for time charter parties or booking notes. If you would like to receive further information please contact our sales team or send your request by email to tonnage@zeamarine.com.

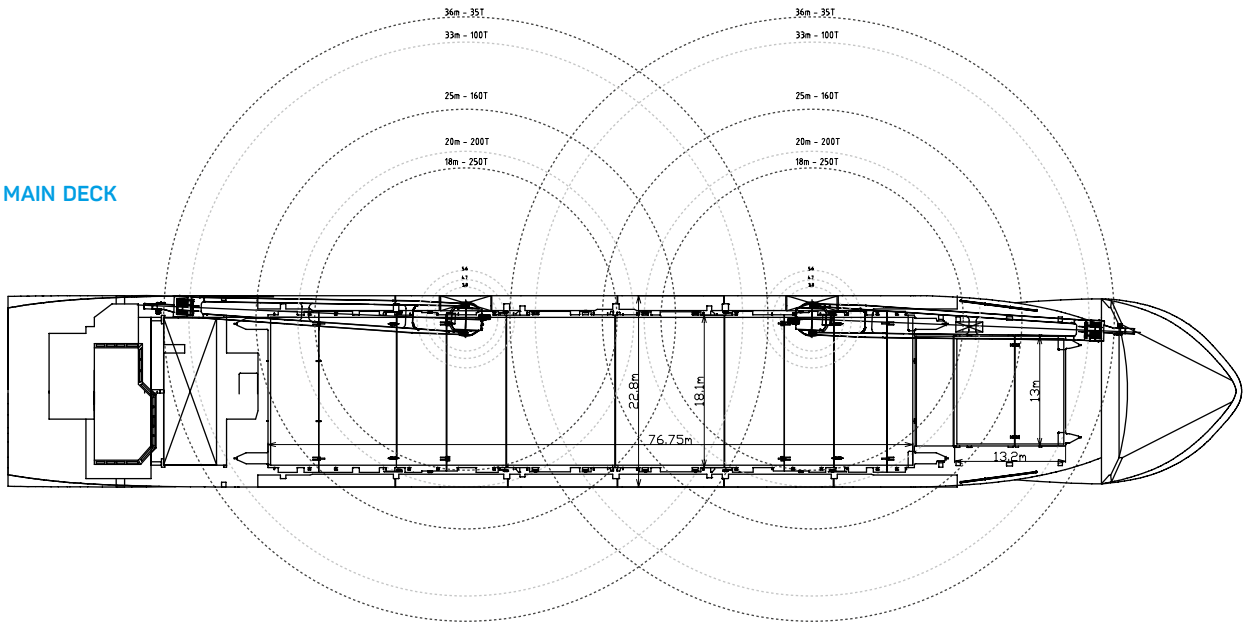
ZEA 12K-500

ZEA SERVANT	INDUSTRIAL SWIFT
INDUSTRIAL SONG	INDUSTRIAL SKIPPER
INDUSTRIAL STRENGTH	

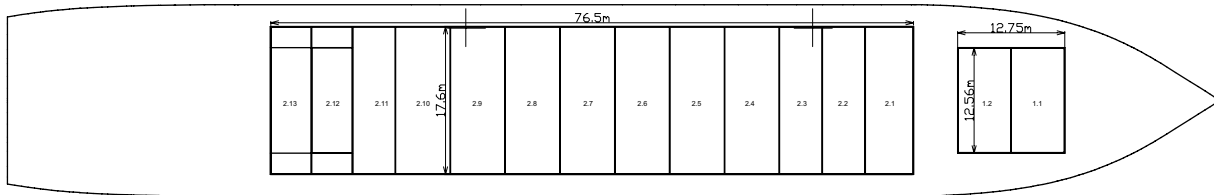
SIDE VIEW



MAIN DECK



TWEENDECK



HOLDS & DOUBLE BOTTOM

