



VESSEL NAME	BUILT	IMO NO.	FLAG	VESSEL NAME	BUILT	IMO NO.	FLAG
BILLESBORG	2011	9488047	PANAMA	ELLESBORG	2011	9488061	PANAMA
BRATTINGSBORG	2010	9488035	PANAMA				

GENERAL INFORMATION

TYPE	HEAVY-LIFT BOX-HOLD MPP TWEENDECKER
CLASS	RINA

TONNAGE

DWT	12,580 MT
GT	9,627
NT	4,261

MAIN DATA

LOA	138.50 M
BEAM	21.00 M
SUMMER DRAFT	8.00 M
MAX SPEED	ABOUT 14 KNOTS

HOLDS / HATCHES

NUMBER	3 HOLDS / 3 HATCHES
HATCH DIMENSIONS	
HATCH NO. 1:	18.75 X 15.04/10.08 M
HATCH NO. 2:	42.00 X 17.50 M
HATCH NO. 3:	25.50 X 17.50 M

FLOOR SPACE

UNDER DECK	2,810 SQM
ON DECK	1,480 SQM
TOTAL	4,290 SQM

CARGO CAPACITY

TOTAL CAPACITY	14,856 CBM BALE
	15,953 CBM GRAIN

DECK STRENGTHS

TANKTOP	16 MT / SQM
TWEENDECK	
HOLD NO.1:	2.5 MT / SQM
HOLD NO. 2 UPPER POS.:	2.5 MT / SQM
HOLD NO. 2 LOWER+MID POS.:	4 MT / SQM
HOLD NO. 3:	4 MT / SQM
HATCHCOVER	1.75 MT / SQM

CONTAINER CAPACITY

IN HOLD	334 TEU
ON DECK	331 TEU
TOTAL (NOMINAL)	665 TEU
REEFER PLUGS	50

CARGO HANDLING GEAR

CRANES	2 X 150 MT (PORT SIDE)
COMBINED LIFT CAPACITY	300 MT

SPECIAL EQUIPMENT/FEATURE

HIGHEST ICECLASS	YES
IMO FITTED	YES
LAKES FITTED	YES
BOWTHRUSTER	500 KW

All above details are given in good faith but without guarantee. This description may not be used as basis for time charter parties or booking notes. If you would like to receive further information please contact our sales team or send your request by email to tonnage@zeamarine.com.

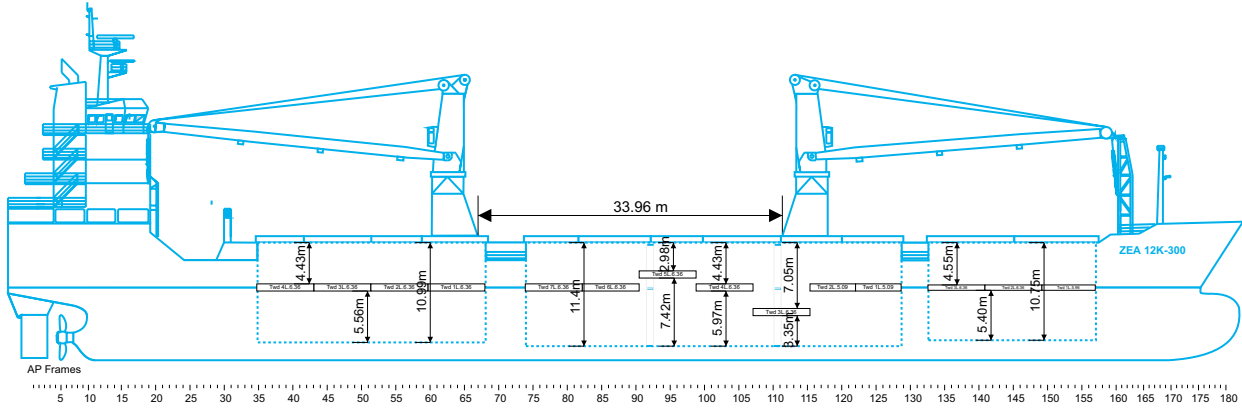
ZEA 12K-300

BILLESBORG

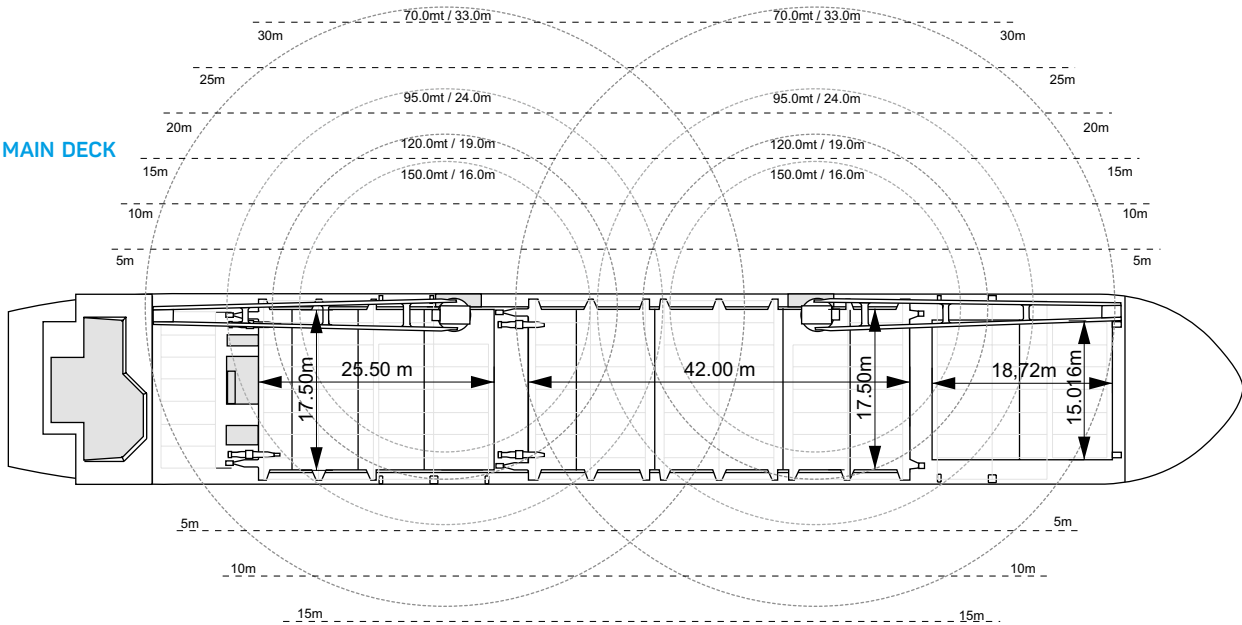
ELLENSBORG

BRATTINGSBORG

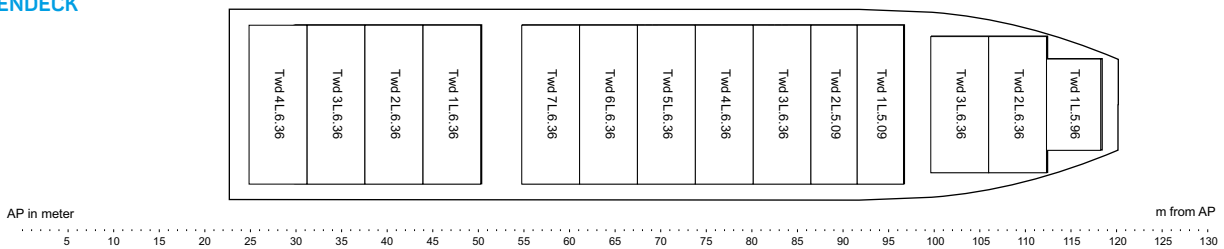
SIDE VIEW



MAIN DECK



TWEENDECK



HOLDS & DOUBLE BOTTOM

