



VESSEL NAME	BUILT	IMO NO.	FLAG
JULE	2005	9357999	ANTIGUA & BARBUDA

GENERAL INFORMATION

TYPE	HEAVY-LIFT BOX-HOLD MPP TWEENDECKER
CLASS	DNV GL

TONNAGE

DWT	12,782 MT
GT	9,608
NT	4,272

MAIN DATA

LOA	138.07 M
BEAM	21.00 M
SUMMER DRAFT	8.00 M
MAX SPEED	ABOUT 15 KNOTS

HOLDS / HATCHES

NUMBER	3 HOLDS / 3 HATCHES
HATCH DIMENSIONS	
HATCH NO. 1:	18.75 X 15.00 M
HATCH NO. 2:	42.00 X 17.50 M
HATCH NO. 3:	25.50 X 17.50 M

CARGO CAPACITY

TOTAL CAPACITY	14,856 CBM (WITH TWEENDECK) 15,952 CBM (WITHOUT TWEENDECK)
----------------	---

FLOOR SPACE

UNDER DECK	TBA
ON DECK	TBA
TOTAL	TBA

DECK STRENGTHS

TANKTOP	16 MT / SQM
TWEENDECK	4 MT / SQM
HATCHCOVER	1.75 MT / SQM

CONTAINER CAPACITY

IN HOLD	334 TEU
ON DECK	331 TEU
TOTAL (NOMINAL)	665 TEU

CARGO HANDLING GEAR

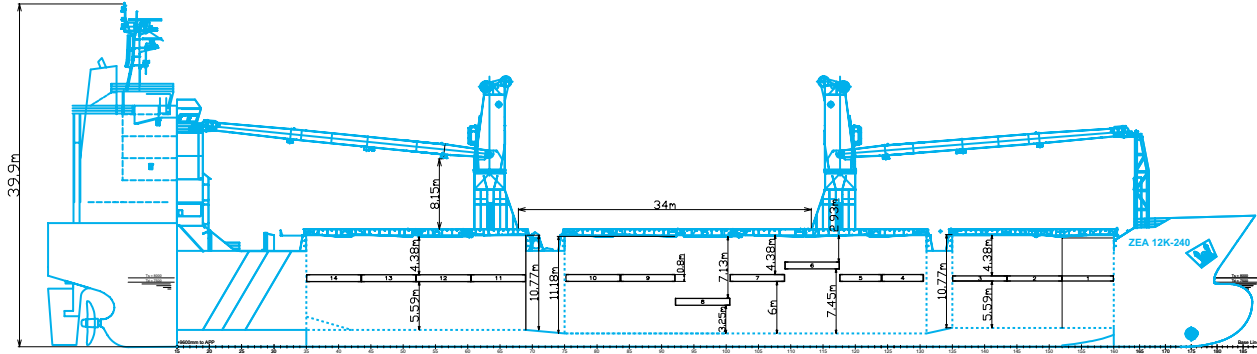
CRANES	2 X 120 MT (PORT SIDE)
COMBINED LIFT CAPACITY	240 MT

SPECIAL EQUIPMENT/FEATURE

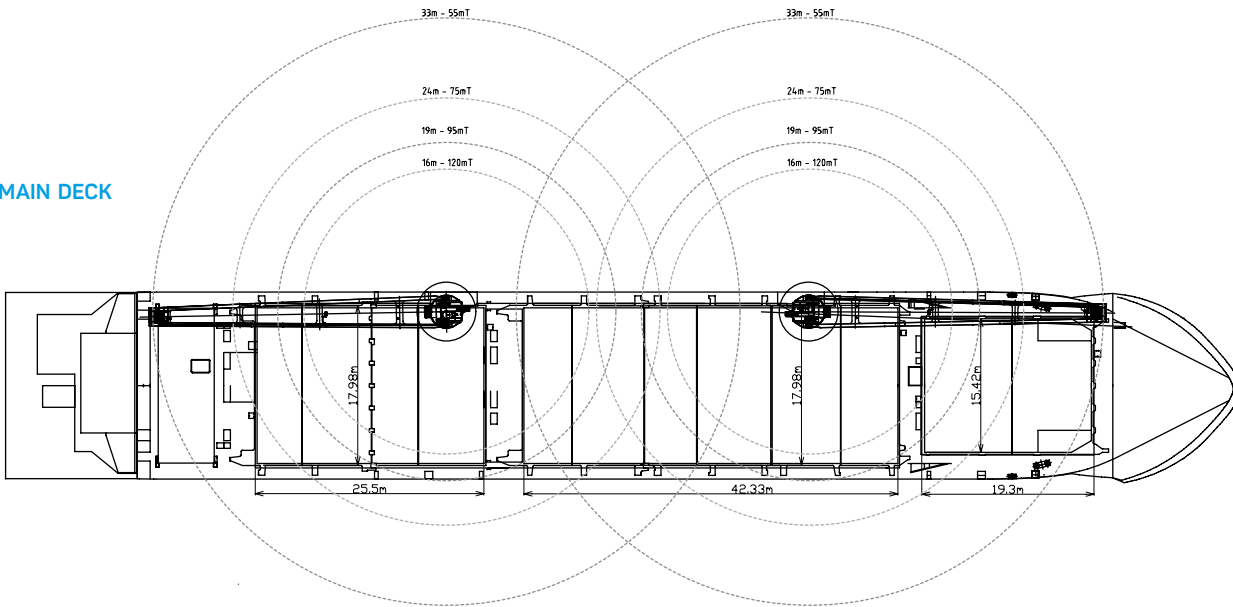
HIGHEST ICECLASS	YES
IMO FITTED	YES
LAKES FITTED	YES
CO2 FITTED	YES
BOWTHRUSTER	500 KW

All above details are given in good faith but without guarantee. This description may not be used as basis for time charter parties or booking notes. If you would like to receive further information please contact our sales team or send your request by email to tonnage@zeamarine.com.

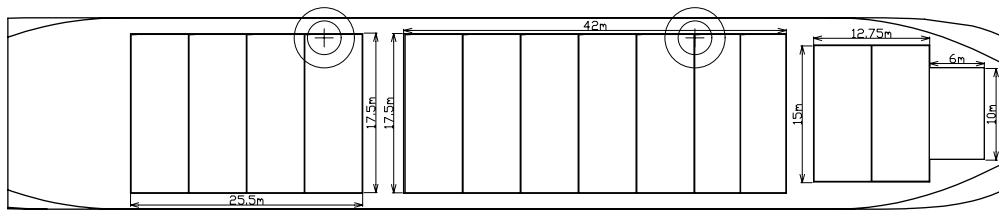
SIDE VIEW



MAIN DECK



TWEENDECK



HOLDS & DOUBLE BOTTOM

