



VESSEL NAME	BUILT	IMO NO.	FLAG
HC OPAL	2010	9377846	ANTIGUA & BARBUDA

#### GENERAL INFORMATION

TYPE	BOX-HOLD MPP SINGLE/TWEEDECKER
CLASS	RINA

#### TONNAGE

DWT	11,200 MT
GT	8,395
NT	4,196

#### MAIN DATA

LOA	129.5 M
BEAM	19.00 M
SUMMER DRAFT	8.70 M
MAX SPEED	ABOUT 13.5 KNOTS

#### HOLDS / HATCHES

NUMBER	2 HOLDS / 2 HATCHES
HATCH DIMENSIONS	
HATCH NO. 1:	SECTION 1: 6.70 X 12.38 M SECTION 2: 5.70 X 12.38 M SECTION 3: 8.03 X 17.33 M
HATCH NO. 2:	58.20 X 15.60 M

#### CARGO CAPACITY

TOTAL CAPACITY	12,432 CBM (WITH TWEEDECK) 13,341 CBM (WITHOUT TWEEDECK)
----------------	---

#### FLOOR SPACE

UNDER DECK	2,207 SQM
ON DECK	1,151 SQM
TOTAL	3,358 SQM

#### DECK STRENGTHS

TANKTOP	18 MT / SQM
TWEEDECK	4 MT / SQM
HATCHCOVER	2 MT / SQM

#### CONTAINER CAPACITY

IN HOLD	272 TEU
ON DECK	400 TEU
TOTAL (NOMINAL)	672 TEU
REEFER RECEPTABLES	60 FOR 20' CONTAINERS

#### CARGO HANDLING GEAR

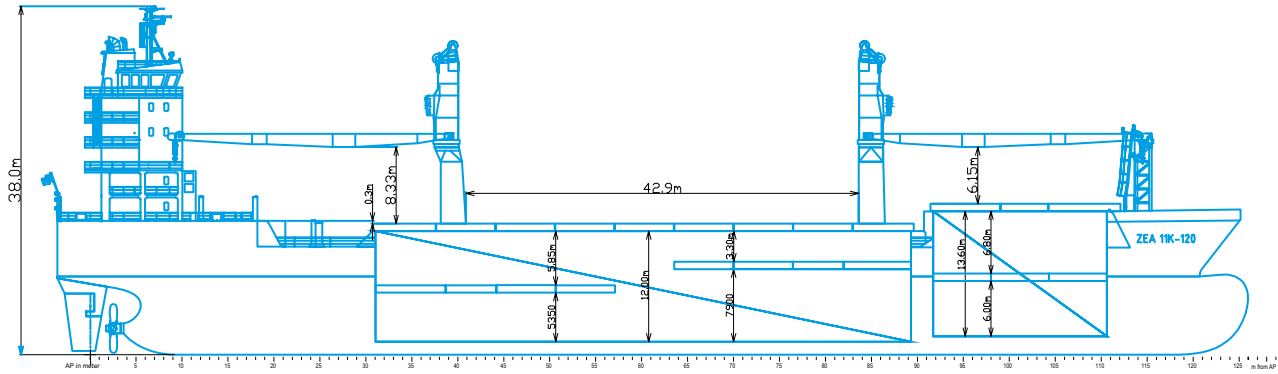
CRANES	2 X 60 TS (PORT SIDE)
COMBINED LIFT CAPACITY	120 MT

#### SPECIAL EQUIPMENT/FEATURE

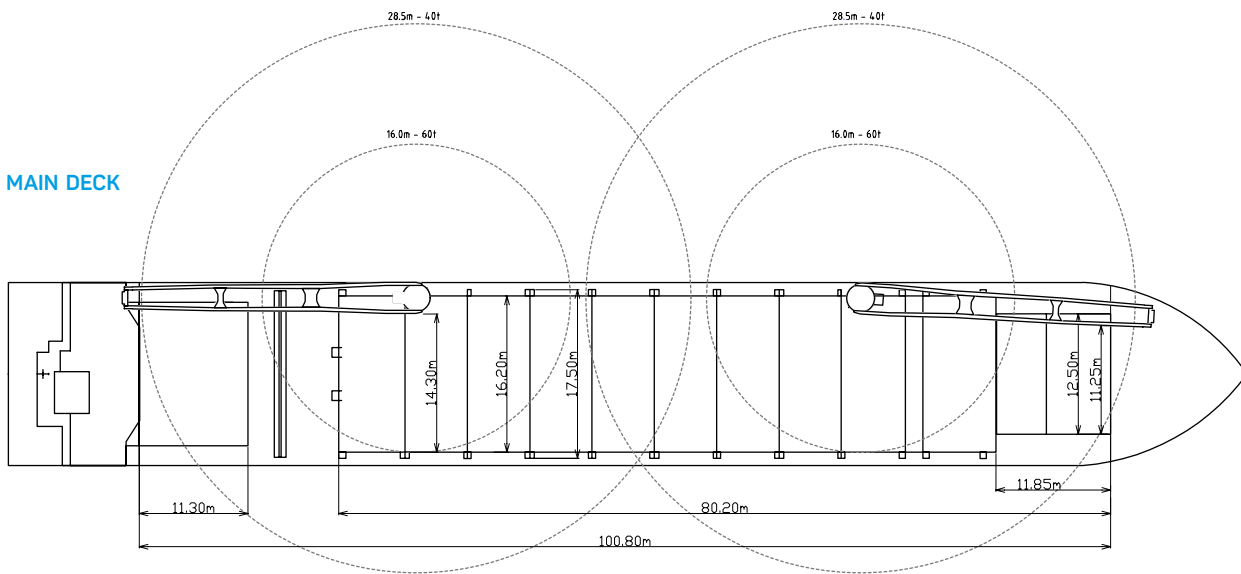
IMO FITTED	YES
CO2 FITTED	YES
BOWTHRUSTER	500 KW

All above details are given in good faith but without guarantee. This description may not be used as basis for time charter parties or booking notes. If you would like to receive further information please contact our sales team or send your request by email to [tonnage@zeamarine.com](mailto:tonnage@zeamarine.com).

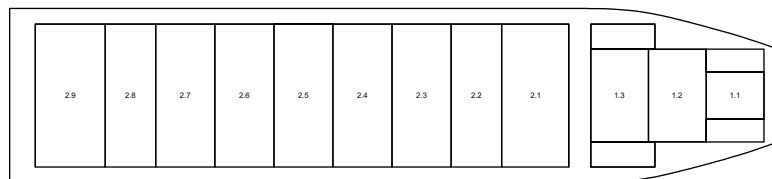
## SIDE VIEW



## MAIN DECK



## TWEENDECK



## HOLDS & DOUBLE BOTTOM

